



## SAMPLERS & COOLERS

### SAMPLE COOLERS



**Sentry Equipment:** Maximum cooling via long sample coil length and shell side baffling. 1/4", 3/8", 1/2" and 3/4" tubing. Ideal for high temperature samples and continuous duty. Coil materials: 316 SS, Inconel, Titanium, Hastelloy C, etc. Many stocked in Houston. Computer sizing available.

### GRAB SAMPLE PANELS *Process & Power*

**Sentry Equipment:** Process sample panels designed for minimum emission representative sampling; 100s of designs. Bottle w/septum or sample cylinder designs. Pre-engineer Boiler water and steam sample panels.



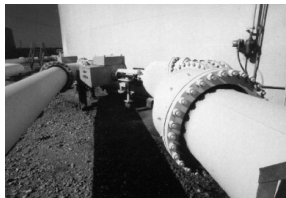
### HANDS-FREE SAMPLING



**Sentry Isolok:** Safe, indirect positive displacement method of sample collection (grab or composite) to provide consistent samples for testing and analysis. Over 16,000 units in service. Hundreds of designs. Engineering staff specializes in custom units. Liquids, Slurry, Powers, Granules, etc.

## PIPING - SPECIALTY ITEMS

### BALL JOINTS & SLIP TYPE - EXPANSION JOINTS

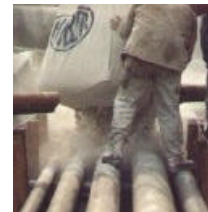


**Advanced Thermal Systems:** Ideal for steam, tank-farm, and flare-line piping. Diameters to 48". Temperatures to 1000F. Individual slip traverses to 32".



### UNDERGROUND - PIPE INSULATION

**DriTherm:** A fine, white, mineral powder treated by a unique process to repel water. In its modified state, this hydrophobic powder insulates and protects underground piping.



### BALL VALVES



**Lance:** 1/4"-2" 2-way, 3-way. CS, 316 SS and Bronze. Quick delivery. Built in America. Options: lock-out, deadman, etc.

## HEAT TRANSFER



### *PLATE AND FRAME HEAT EXCHANGERS*

**Polaris:** High efficiency heat exchangers at a fraction of the cost of shell & tube. Wide choice of plate materials. Flow rates from 1 gpm to 2,000 gpm.

### *SPIRAL TUBE HEAT EXCHANGERS*

**Sentry Equipment:** Spiral Tube design allows thermal expansion without shell side expansion joint. (1 to 300 GPM) .



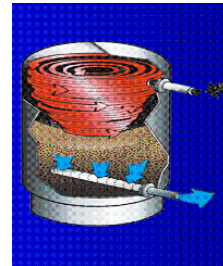
## WATER CONDITIONING

### *CUSTOM & PRE-ENGINEERED*

**Ecodyne & Isopure:** Softeners, Demineralizers, and RO systems. Tank flow rates up to 800 gpm. Solid state controls, digital diagnostics, and hydroblast cleaning. Many smaller units in stock.



**Vortisand: Water Filtration System.** Removes particulates down to 0.45micron (10-20 times finer than sand filtration). Combines centrifugal separation and ultra-fine sand filtration. Ideal for cooling tower or chill water slip stream filtration.



Ed Reed Company, Inc.  
531 S. Third St. Bellaire, TX 77401  
P.O. Box 1611 Bellaire, TX 77402  
713-432-0519  
Fax 713-432-0933

<http://www.edreed.com/>

### CONTACT



**TED REED** [tedreed@edreed.com](mailto:tedreed@edreed.com)

Ted joined the firm in 1984 after working for ARCO Chemical as a plant engineer. He is a graduate of Texas A&M with a degree in Mechanical Engineering.