



SENTRY WSW SINGLE HELICAL TUBE

Sample Coolers

SAMPLE CONDITIONING

The Sentry® WSW sample cooler cools a sample from a process stream. It may seem simple, but it is a uniquely designed small tube in a shell heat exchanger. The sample to be cooled flows through the tube side of the cooler, and the cooling fluid, usually water, flows through the shell side. The cooled sample then is taken to a laboratory for analysis or piped to in-line process instrumentation for continuous monitoring of properties such as conductivity, pH or other chemical constituents.

MODELS

WSW-8222 | WSW-8222U

BENEFITS

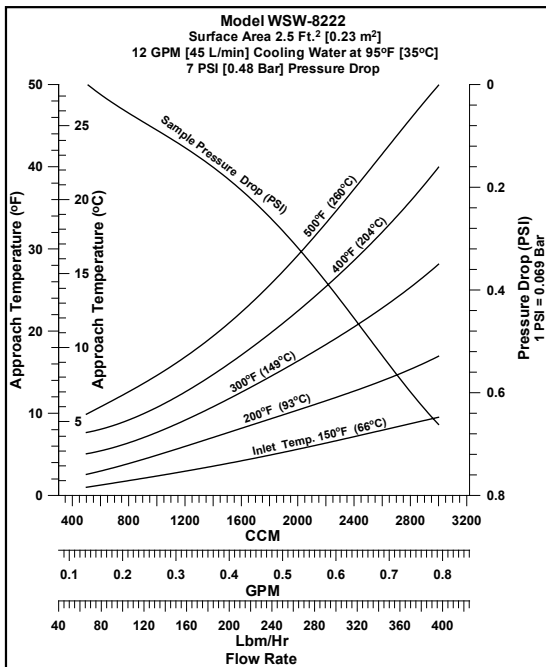
The Sentry WSW series sample cooler is designed for use in applications where drainability is critical but efficiency cannot be compromised. Its larger diameter sample tube makes it especially useful for high viscosity liquids and slurries. It offers optimal service for flows below 3000 cc per minute for single phase heat transfer. Standard tube side material is 316/316L stainless steel.

FEATURES

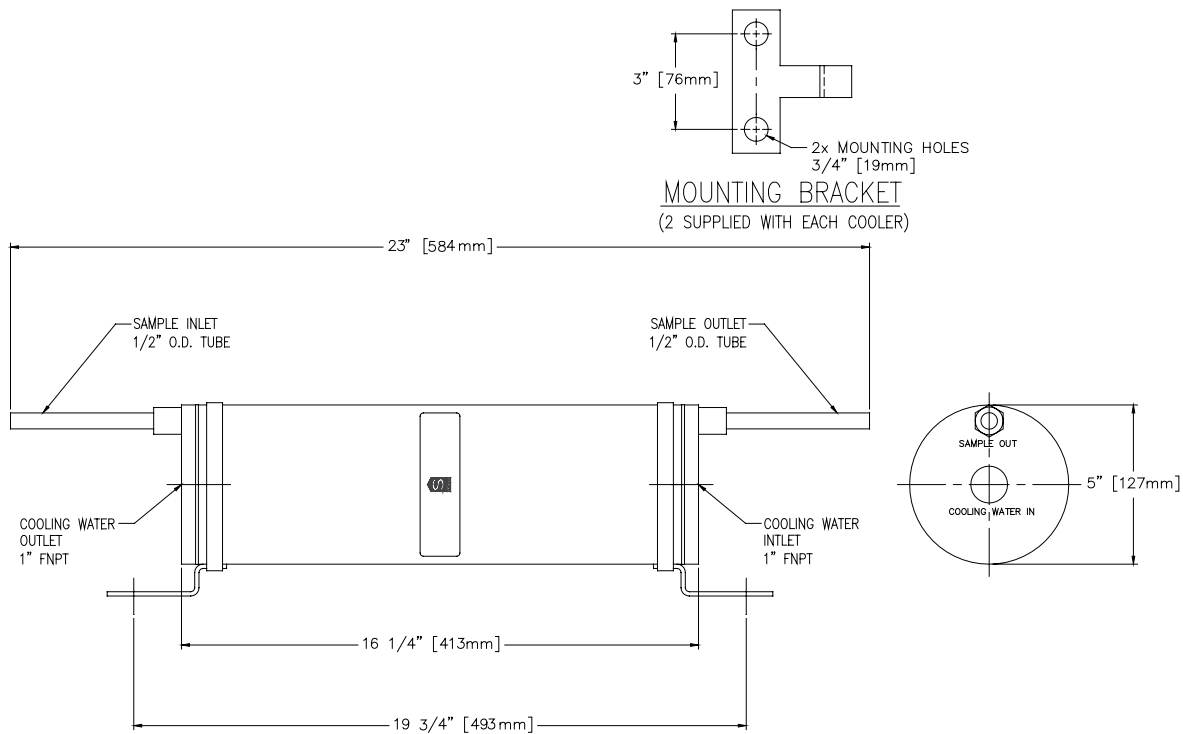
- Fully drainable helical coil
- Low pressure drop



NOTE: Not recommended for steam condensing service. See TLR, FLR, FXR series sample coolers for steam applications.



PERFORMANCE CURVE (Water)



SPECIFICATIONS

models	shell design	tube design	tube material	shell material	area	shipping weight	part number
WSW-8222	400 psi at 350°F (27 bar at 177°C)	1200 psi at 650°F (82 bar at 343°C)	316/316L SS	304 SS	2.5 ft ² (0.23 m ²)	25 lb (11.5 kg)	7-00712A
WSW-8222U			1/2 in OD x 0.035 in AW				7-00712G

NOTES:

- U in model number denotes ASME stamped model.
- Canadian Registration Number available for ASME stamped models only. Consult factory for CRN and other options and information.
- Vessels are exempt from CE marking per PED 97/23/EC, TÜV. Vessels are below or equal to the limits set forth in Article 3, Sections 1.1, 1.2, 1.3 and Section 2 as applicable, and are designed and manufactured in accordance with sound engineering practice (meets the general requirements of the ASME Section VIII, Division 1, Boiler And Pressure Vessel Code). Nameplate will bear the Sentry and safety instructions will be included per Article 3, Section 2.

ED REED
COMPANY



TX 713.432.0519
LA 225.663.5612

address P.O. Box 1611
Bellaire, TX 77402

website Edreed.com
email Ben@edreed.com

sentry-equip.com

966 Blue Ribbon Circle North, Oconomowoc, WI 53066 U.S.A. | +1-262-567-7256 | sales@sentry-equip.com



© 2015 Sentry Equipment Corp. All rights reserved. All product and company names are property of their respective owners. It is solely the responsibility of end users, through their own testing and analysis, to select products and materials suitable for their specific application requirements, ensure they are properly installed, safely applied and properly maintained, and to limit their use to their intended purpose. Improper selection, installation or use may result in personal injury or property damage.

S-SC&HE-SPS-00128-9 3-16

COMPANY WITH
QUALITY SYSTEM
CERTIFIED BY DNV GL
= ISO 9001 =